



A unique warehouse opportunity in Montgomery County

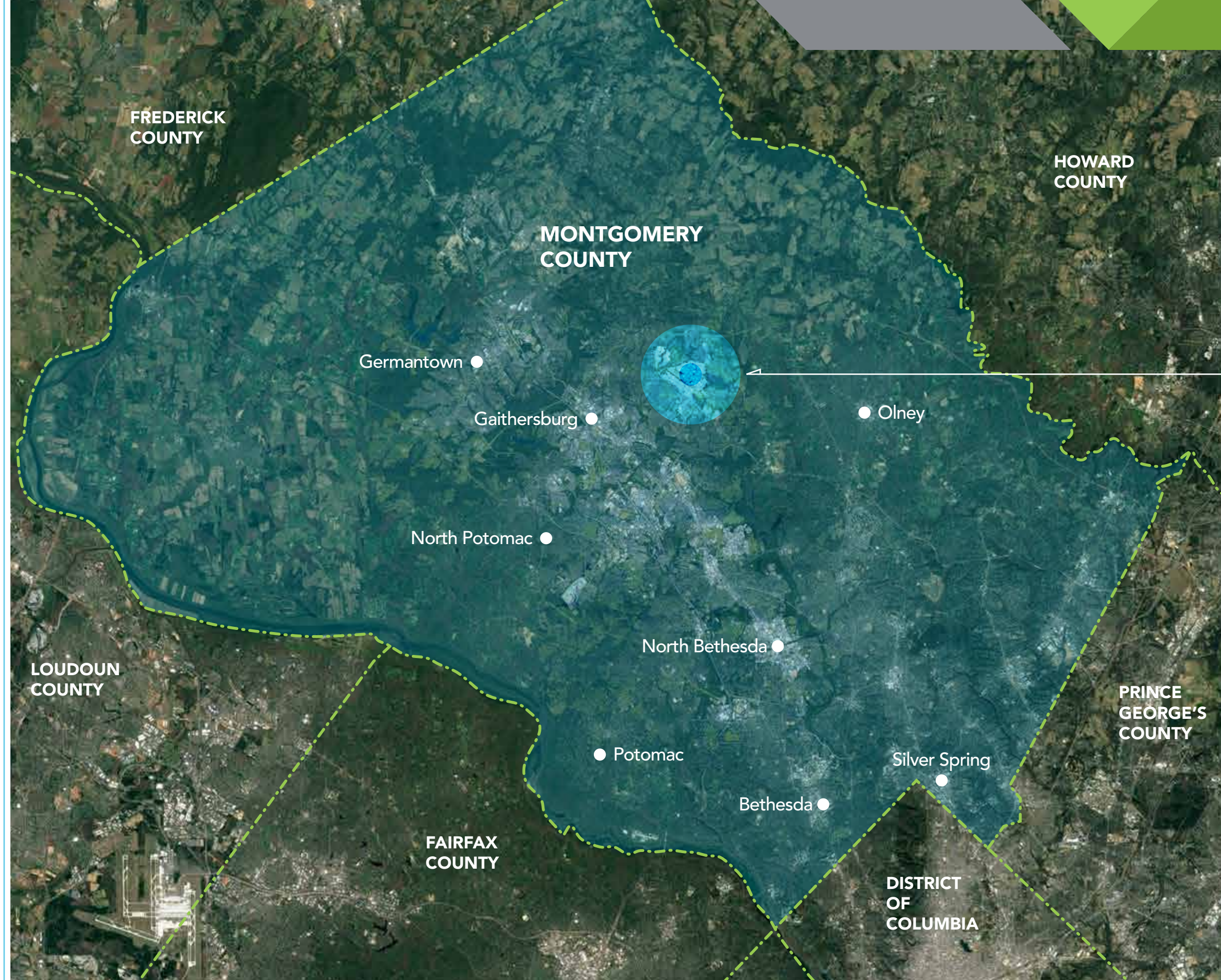


PREPARED BY

MATAN

TABLE OF CONTENTS

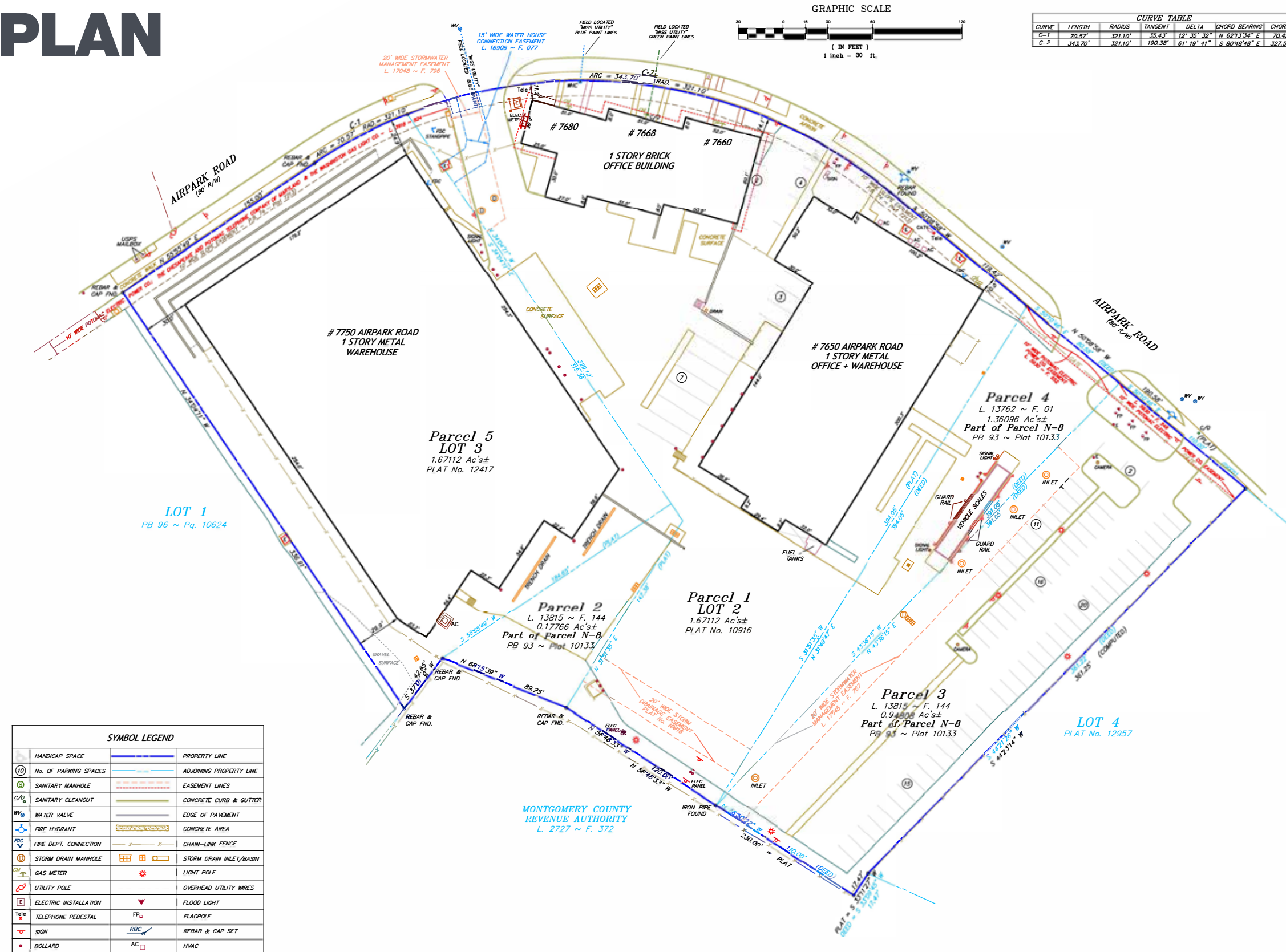
| | |
|-----------------|----|
| Maps & Aerials | 02 |
| Site Plan | 04 |
| Images | 05 |
| Floor Plans | 10 |
| Matan Companies | 16 |





AIRPARK
INDUSTRIAL

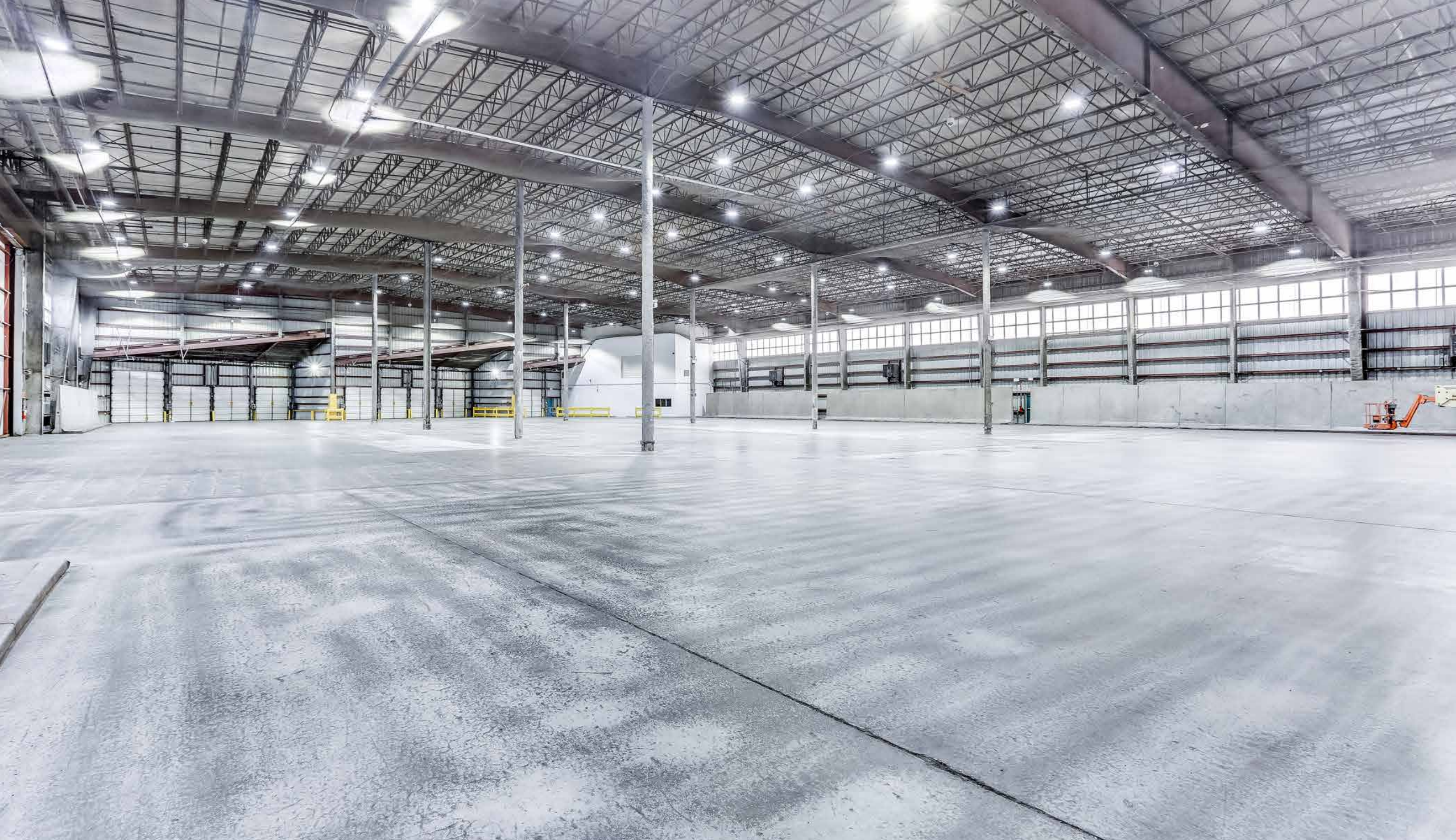
SITE PLAN

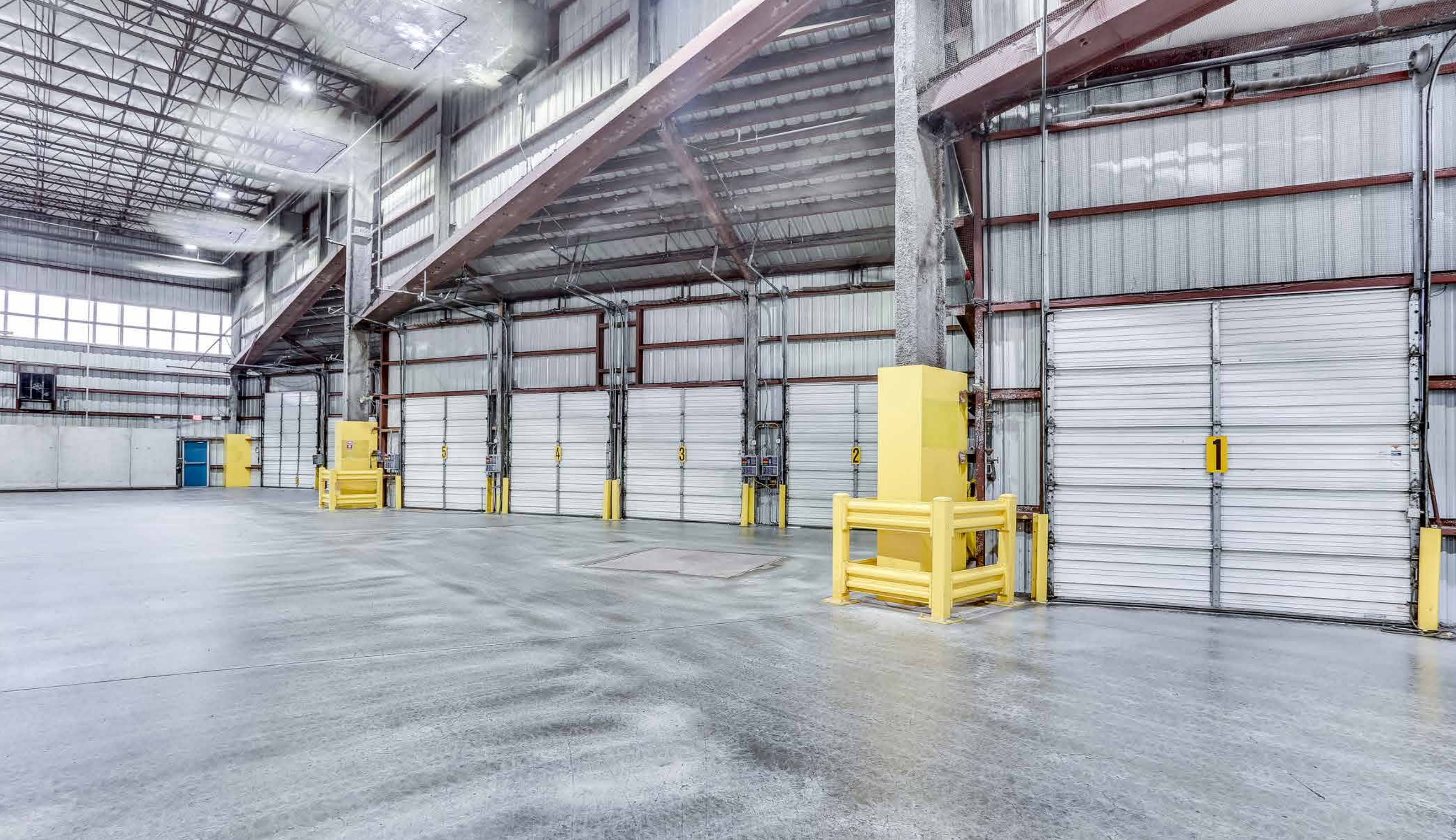






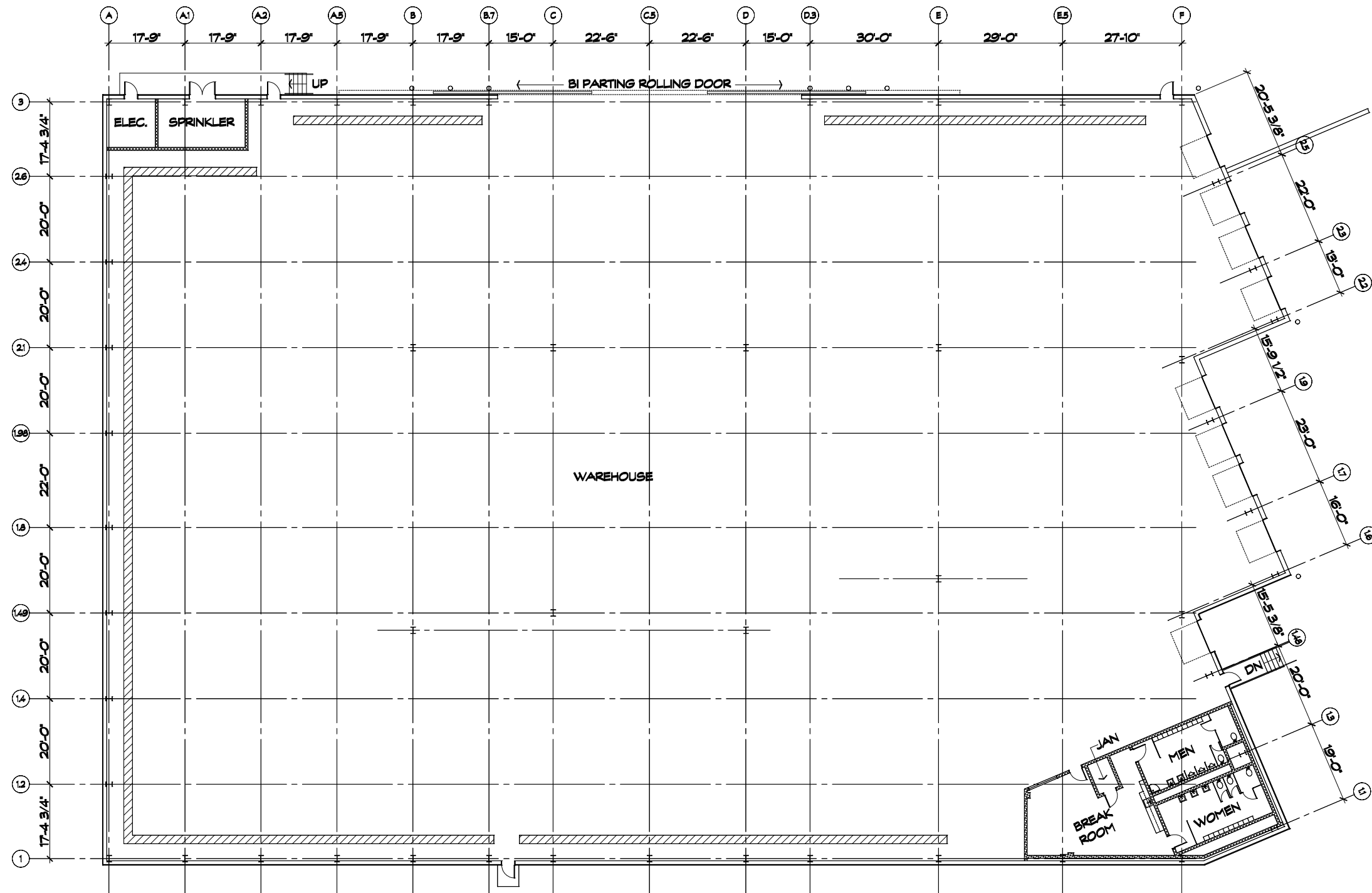






FLOOR PLANS

7750 Airpark Drive (A)



FLOOR PLANS

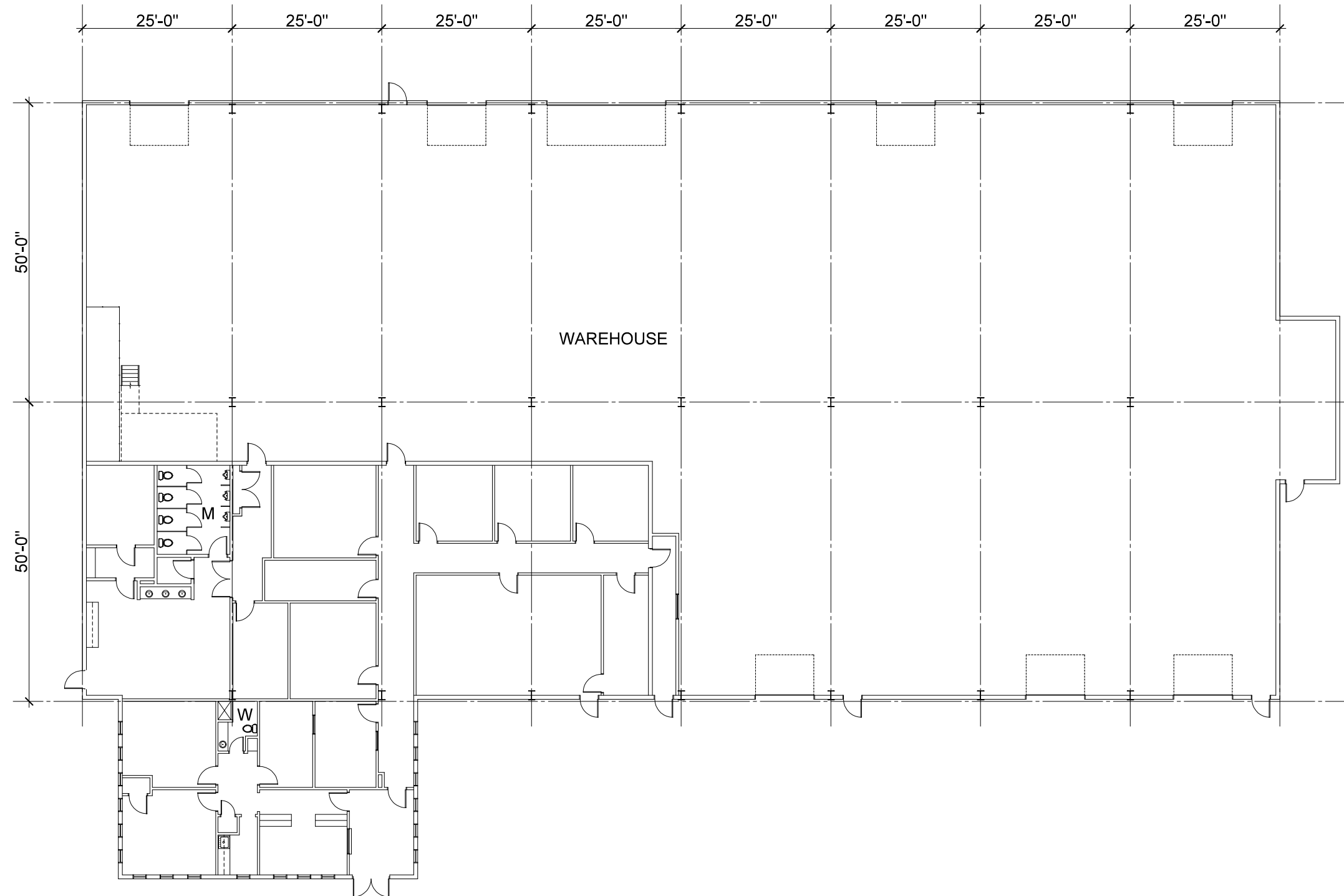
7750 Airpark Drive (B)



TOTAL AREA = 47,878 RSF

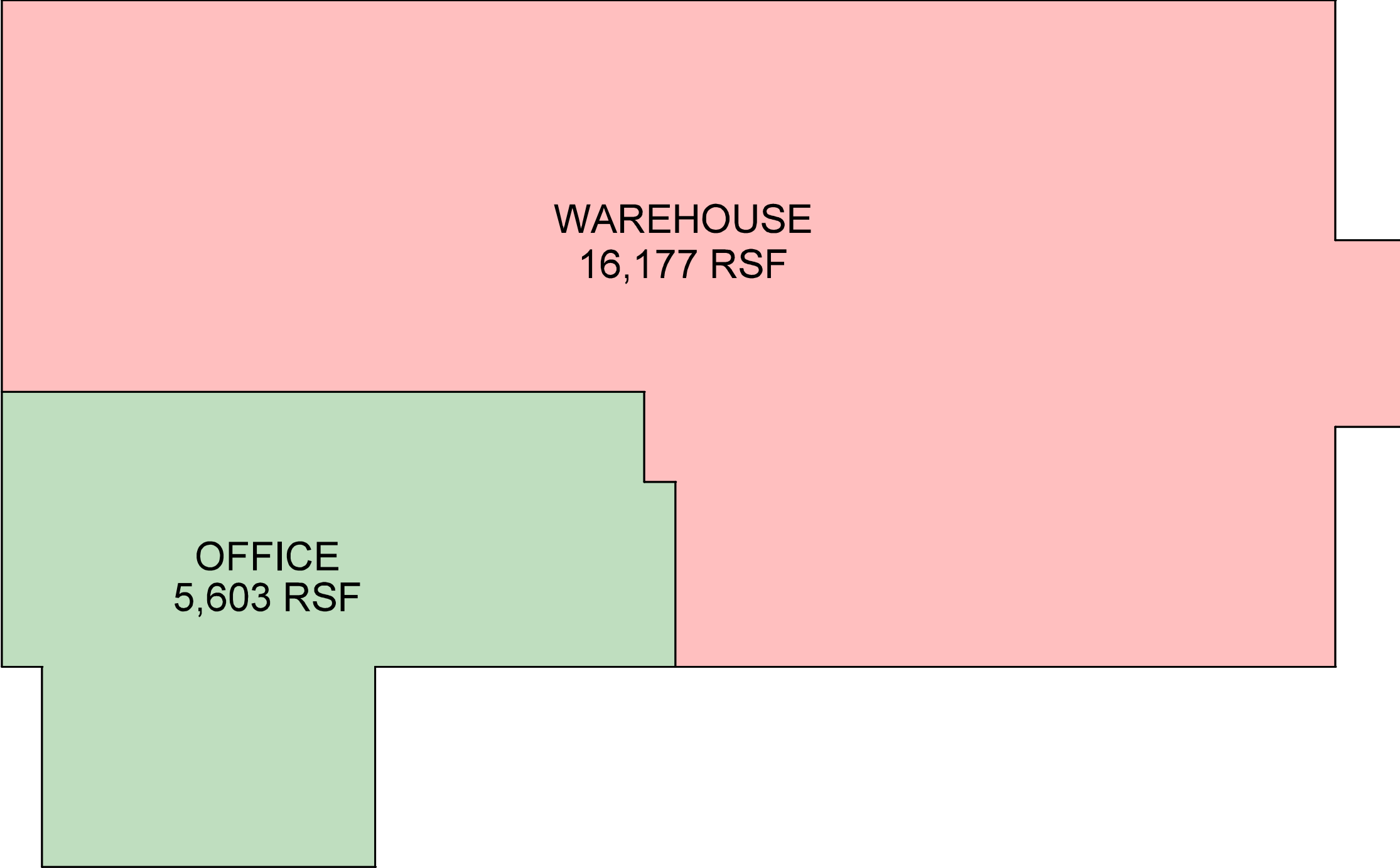
FLOOR PLANS

7650 Airpark Drive



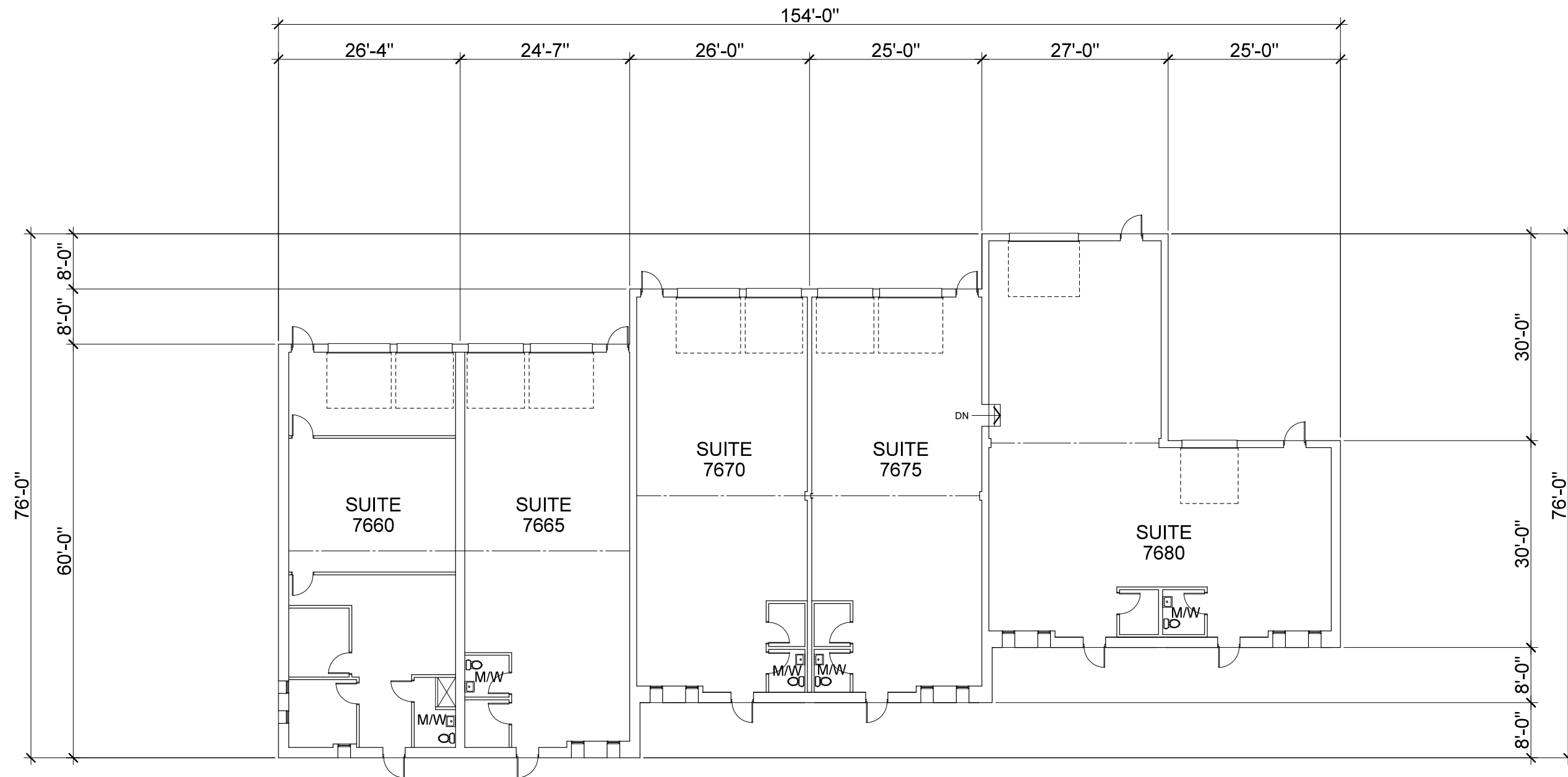
FLOOR PLANS

7650 Airpark Drive



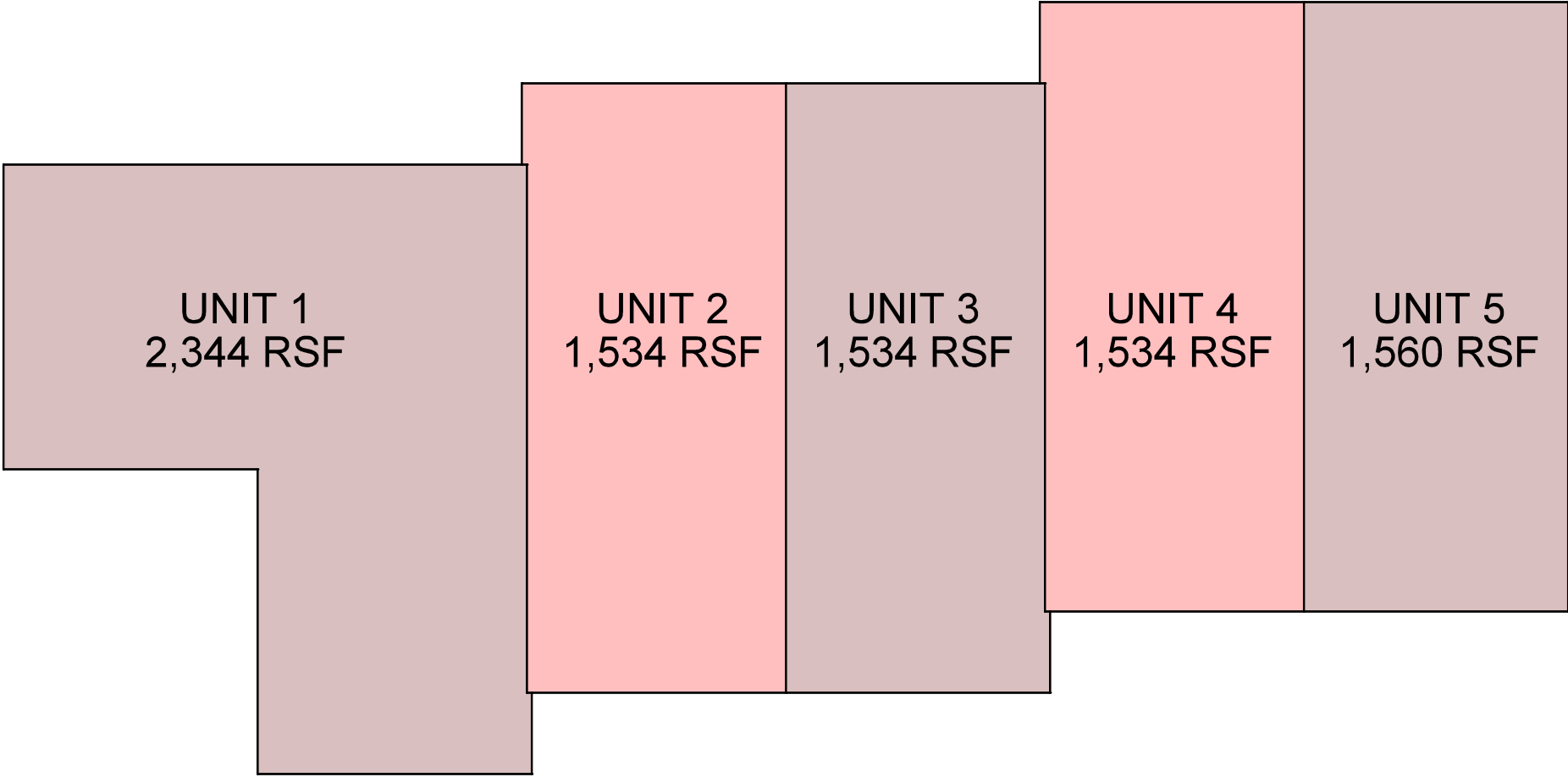
FLOOR PLANS

7660-7680 Airpark Drive



FLOOR PLANS

7660-7680 Airpark Drive



TOTAL AREA = 8,506 RSF



Matan Companies

Established in 1979, Matan Companies is the region's premier vertically-integrated commercial real estate and development firm, having directed and invested over \$2 billion in real estate transactions in the greater Washington, D.C. metropolitan area. Headquartered at its Wedgewood II property in Frederick, MD, Matan maintains dedicated in-house development, leasing, property management and asset management teams and generally does not participate in third-party brokerage assignments, preferring to concentrate efforts on its own portfolio. Since inception, the company has developed 4.0 million sf of industrial and office assets and currently owns and operates over 6.2 million sf. In addition, the company controls land with 6.5 million sf of development potential, several parcels of land ripe for sale to active residential developers, and a portfolio of multifamily assets.





 (301) 694-9200

 [MATANINC.COM](https://www.mataninc.com)

Should you have any questions or concerns, please contact:

James A. Matan
Matan Companies
jmatan@mataninc.com
(301) 815-9961

MATAN