

# WEST PARK

10 NORTH JEFFERSON STREET | FREDERICK, MD | WWW.MATANINC.COM

**NOW LEASING**



## PROPERTY HIGHLIGHTS

### SPACE AVAILABLE

- Suite 100: 1,333 SF
- Suite 403: 3,200 SF
- **Total Space Available: 4,533 SF**

### OVERVIEW

- 4 story office building
- 28,417 total square feet
- 0.527 acres

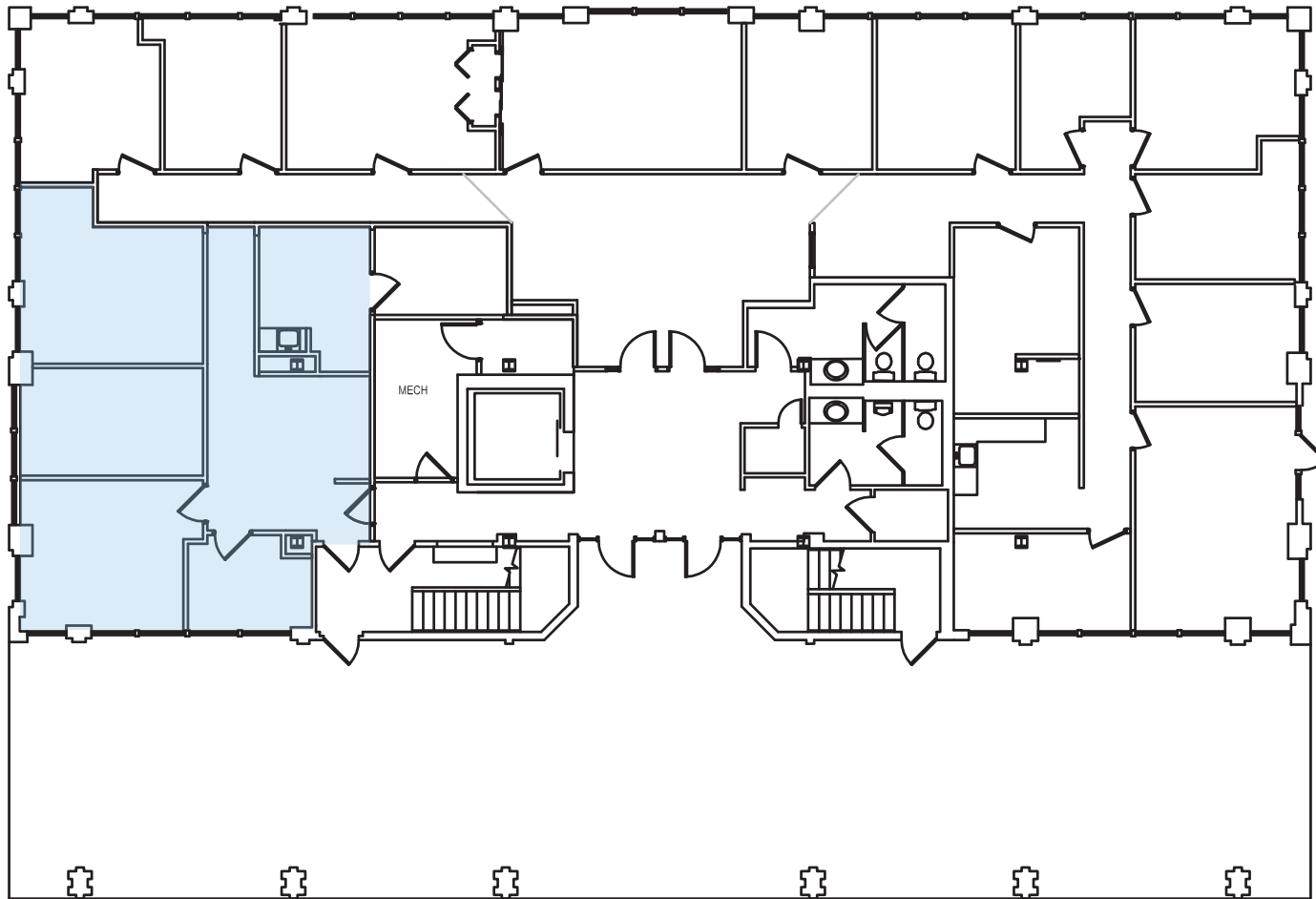
### AMENITIES

- Surface and covered parking
- Easy access to I-70 and I-270
- Close proximity to downtown Frederick
- 2 miles from Fort Detrick
- Close proximity to Baker Park
- Recently renovated common areas and elevator interiors
- Spectacular views of Frederick

**EASY ACCESS TO I-70 AND I-270**

**MATAN**

SUITE 100  
1,333 RSF



SUITE 403  
3,200 RSF

