



# WEST PARK

10 NORTH JEFFERSON STREET | FREDERICK, MD | [WWW.MATANINC.COM](http://WWW.MATANINC.COM)

**NOW LEASING**



## PROPERTY HIGHLIGHTS

### SPACE AVAILABLE

- Suite 110: 3,478 SF (Suite A - 1, 349 SF & Suite B - 2,399 SF)
- Suite 302: 1,765 SF
- **Total Space Available: 5,243 SF**

- 4 story office building
- 28,417 total square feet
- 0.527 acres

### AMENITIES

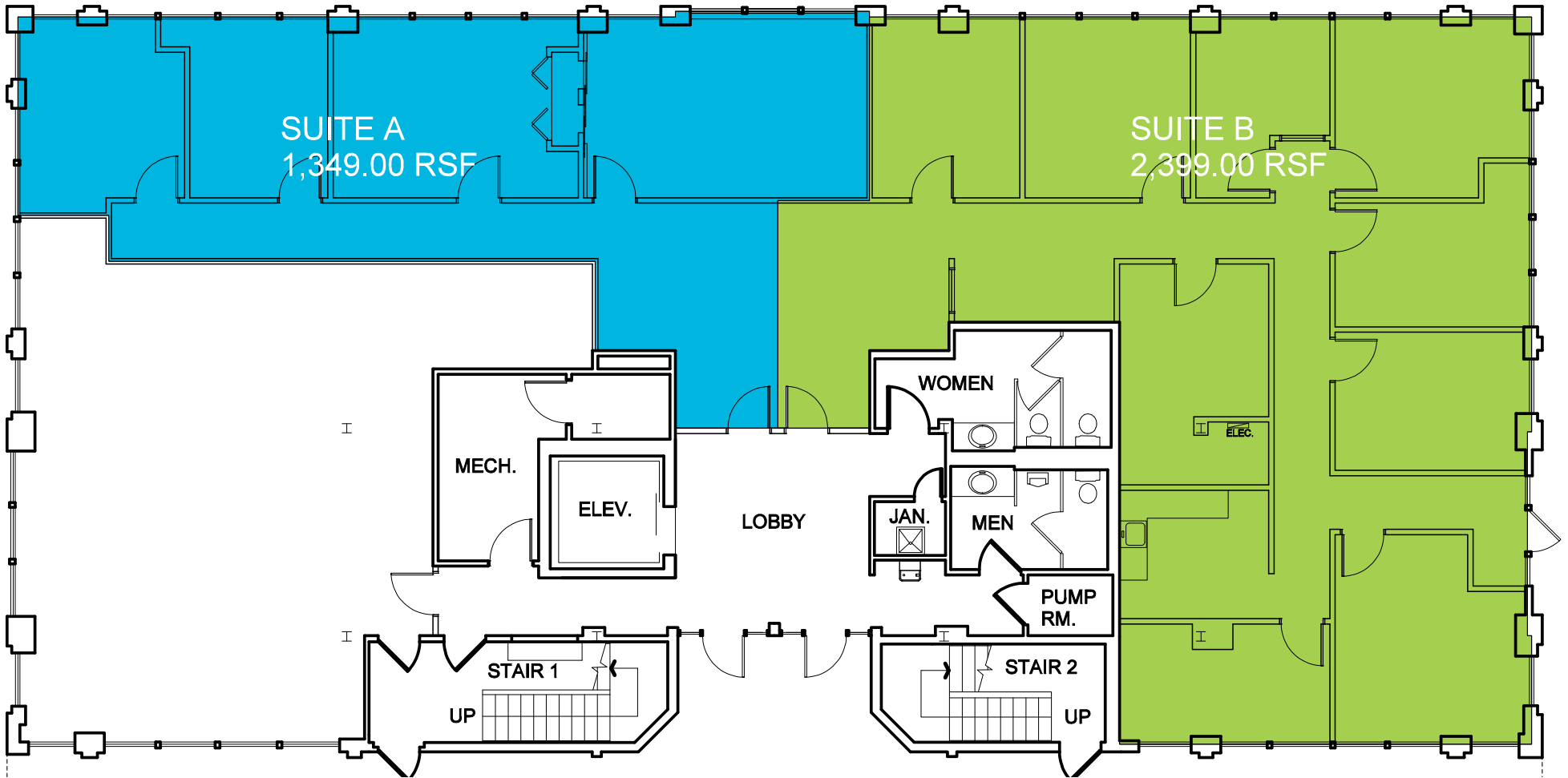
- Surface and covered parking
- Easy access to I-70 and I-270
- Close proximity to downtown Frederick
- 2 miles from Fort Detrick
- Close proximity to Baker Park
- Recently renovated common areas and elevator interiors
- Spectacular views of Frederick

**EASY ACCESS TO I-70 AND I-270**



10 N. JEFFERSON STREET: FLOOR 1

SUITE 110 - 3,479 SF



10 N. JEFFERSON STREET: FLOOR 3

SUITE 302 - 1,765 SF

